

Scotsman®
UNDERCOUNTER UNITS

CU0920 - 100 lb Self-Contained Ice Machine

Self-Contained Under Counter Cuber with Storage



Features and Benefits

Reliability:

- 3 year parts and labor warranty
- Assembled in the USA
- Corrosion resistant exterior

Ease of Use:

- Slide back door allows easy access to ice in the bin
- Intuitive control panel allows for quick and easy operation
- Ice scoop included

Compact Design:

- Only 20" wide, the ice maker can be placed in the tightest locations
- Optional floor mount kit allows for installation under 34" ADA counter tops

High Production:

- Produces up to 100 lb (46 kg) per day and stores 57 lb (26 kg), meeting the ice demands for many different applications

Quality Ice:

- Unique evaporator produces crystal clear cubes

Environmentally Friendly:

- Meets US federal energy efficiency requirements
- Meets US Safe Drinking Act low lead requirements
- Non-ozone depleting R290 refrigerant



Clear Cube Evaporator Technology



Unit Specific QR Code for Quick Access to Service Manuals, Cleaning Guides and Warranty History



Ergonomic Slide Back Door Allows Easy Access to Ice in the Bin



ADA Compliant with Optional Floor Mount Kit



24 Hour Volume Production

Air Cooled

70°F/21°C 50°F/10°C	Air Water	90°F/32°C 70°F/21°C
100/45 lb/kg		77/35 lb/kg



Cube Ice

Large, slow-melting ice form, ideal for mixed drinks.



Cube Dimensions
7/8" x 7/8" x 7/8"
(2.22 x 2.22 x 2.22 cm)



Certification



Warranty

- 3 Years parts and labor on all components
- Warranty valid in North, South & Central America for commercial installations
- Contact factory for warranty in other regions
- Residential Applications: 1 year parts and labor

CU0920 - 100 lb Self-Contained Ice Machine

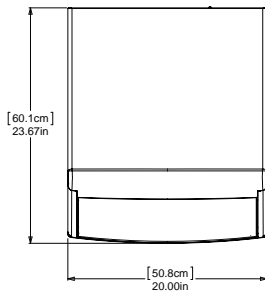
Scotsman®

101 Corporate Woods Parkway, Vernon Hills, IL 60061

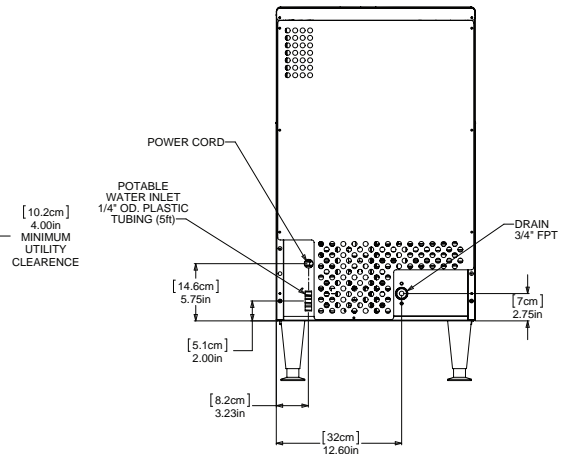
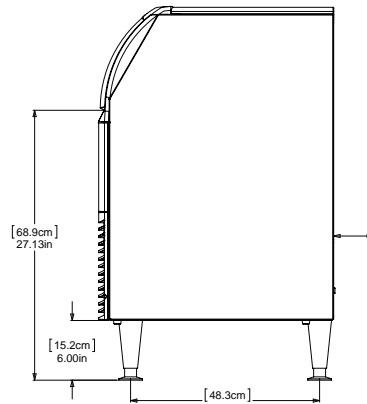
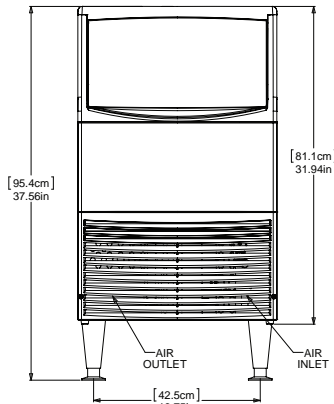
1-800-SCOTSMAN | Fax: 847-913-9844 | www.scotsman-ice.com | customer.relations@scotsman-ice.com

CU0920 - 100 lb Self-Contained Ice Machine

Self-Contained Under Counter Cuber with Storage



Front Breathing and No Side Clearance Required, Allowing For Flexible Placement



Recommended Minimum Clearance: Side: 1/8"
Top: 1/4"
Back: 4"



Specifications

Model Number	Condenser Unit	Storage Capacity	Basic Electrical Volts/Hz/Phase	Max. Fuse Size or HACR Circuit Breaker (Amps)	Circuit Wires	Min. Circuit Ampacity	Energy Consumption kWh/100 lb (45.4 kg) 90°F (32°C)/70°F (21°C)	Potable Water Usage (Gallons/100 lb [liters/45.4 kg]) Potable Condensor 90°F (32°C)/70°F (21°C)
CU0920MAX-1	Air	57/26	115/60/1	15	2	Cord	8.07	29/110



All Models

Dimensions (W x D x H):

Unit: 20" X 24" X 38"
(50.8 x 61.0 x 96.5 cm)
Includes 6" (15.24 cm) adjustable legs

Shipping Carton: 22" x 27" x 38"
(55.9 x 68.6 x 96.5 cm)

Shipping Weight: 118 lb / 54 kg
BTUs per hour: 4,100
Refrigerant: R290
Refrigerant Charge (oz): 3.75



Accessories

Model Number	Description
KLP8S	Kit, Leg 6", Stainless Steel
KBC1	Kit, Casters
KUFM15	For ADA applications. Floor mount kit lowers overall height to 31.9"

Scotsman recommends all ice machines have water filtration. See Scotsman water filter specification sheet for details.



Operating Requirements

	Minimum	Maximum
Air Temperatures	50°F (10°C)	100°F (38°C)
Water Temperatures	40°F (4.4°C)	100°F (38°C)
Water Pressures	15 PSIG (1.4 bar)	80 PSIG (5.5 bar)
Electrical Voltage	-5%	+10%

Specifications and design are subject to change without notice.

CU0920 - 100 lb Self-Contained Ice Machine